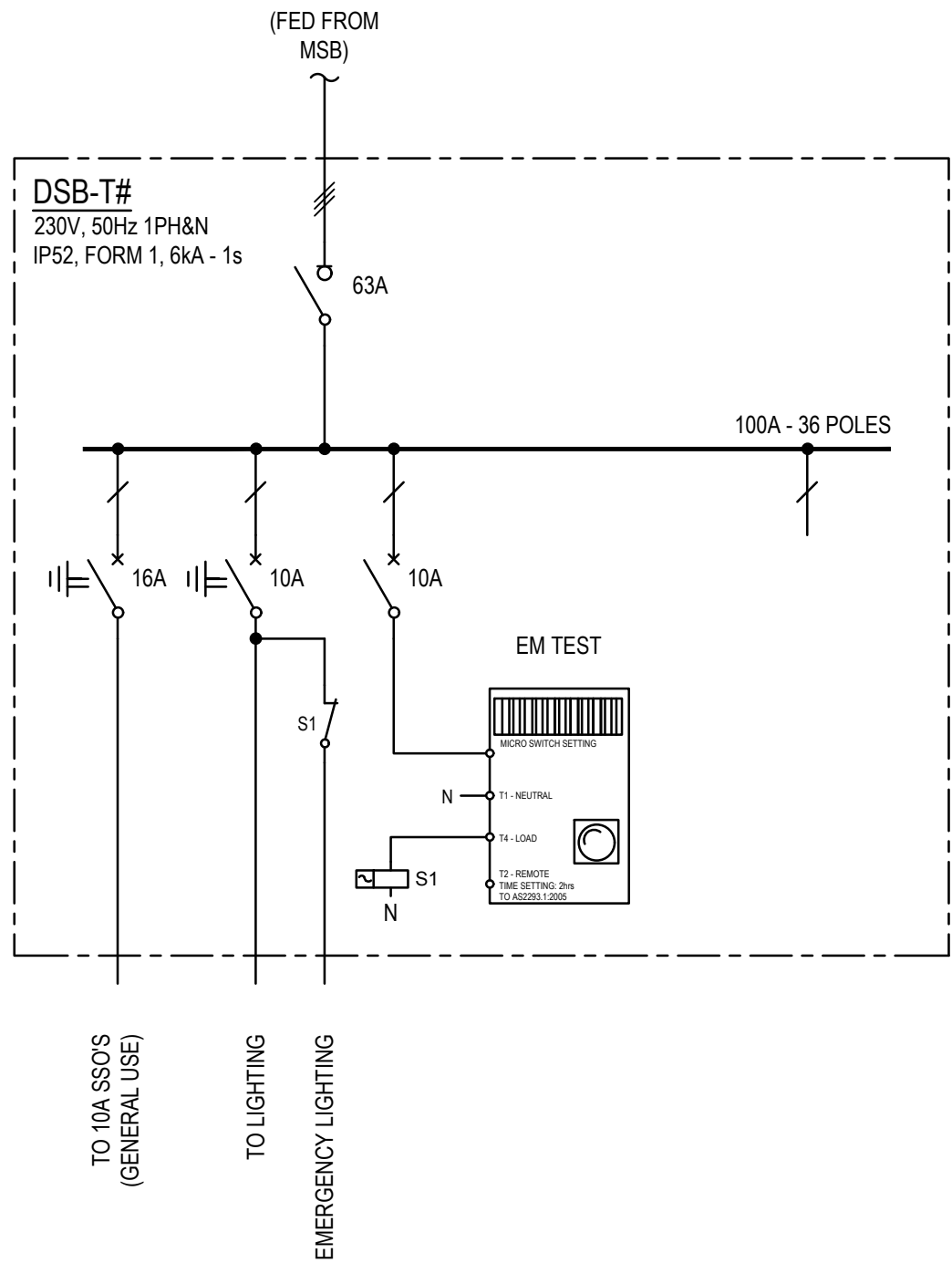


DRAWINGS TO BE READ IN CONJUNCTION WITH ELECTRICAL SPECIFICATION



| CABLE SCHEDULE | | |
|------------------|-------------------|-----------|
| Cable Identifier | Cable Description | Volt Drop |
| 1 | CONSUMER MAINS | |
| 2 | DSB-GF-1 | |
| 3 | DSB-1F-1 | |
| 4 | DSB-1F-2 | |
| 5 | DSB-1F-3 | |
| 6 | DSB-2F-1 | |
| 7 | DSB-2F-2 | |
| 8 | DSB-2F-3 | |
| 9 | DSB-3F-1 | |
| 10 | DSB-3F-2 | |
| 11 | DSB-3F-3 | |
| 12 | FIP | |
| 13 | LIFT | |

| Rev | Date | Issue Description | By |
|-----|----------|------------------------|-----|
| 1 | 22-06-18 | BUILDING RULES CONSENT | CLB |
| 0 | 18-05-18 | BUILDING RULES CONSENT | CLB |

Project
PROPOSED COMMERCIAL DEVELOPMENT
97 KING WILLIAM STREET
KENT TOWN

Title
ELECTRICAL SERVICES
SINGLE LINE DIAGRAM

Architect

ANTHONY DONATO ARCHITECTS

Suite 5/59 Fullarton Road | Kent Town SA 5087
t: 08 8364 6888 | f: 08 8364 5355 | www.adarchitects.com.au

SECON
consulting engineers

456 PULTENEY STREET
ADELAIDE
SOUTH AUSTRALIA 5000

TEL: 08 8223 7800
engineers@secon.net.au
A.B.N. 30 613 300 299
A.C.N. 613 300 299

| © COPYRIGHT SECON PTY. LTD. 2017 | | | |
|----------------------------------|-------|-----------|--------------|
| North | DRAWN | CLB | CHECKED |
| | ENG | RB | Q.A. AD |
| | DATE | MAR 18 | SCALE NTS |
| | | | SHEET 9 OF X |
| DRAWING No. | | B8014-E09 | |
| 22/06/2018 | | | |
| PLOT DATE: | Size | Rev. | 1 |